



June 24, 2016

MA PLATFORM, Inc.
Toranomon 2-chome Tower
2-3-17 Toranomon, Minato-ku, Tokyo, Japan
105-0001

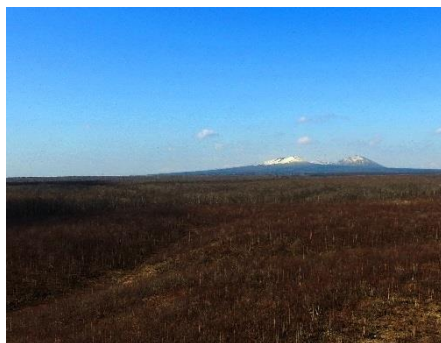
In regards to land acquisition in Tomakomai, Hokkaido

20-minute drive from New Chitose Airport, approximately 1,057ha of land
within an Urbanization Control Area, hotel opening planned for 2020

March 2016, MA PLATFORM, Inc., (Headquarters: Minato-ku, Tokyo, CEO: Akira Mori) acquired land in Tomakomai, Hokkaido (located: 620-1 Azauenae, Tomakomai, Hokkaido, et al., herein referred to as the “Property”).

Hokkaido has beautiful landscape in each of its four seasons, rich hot springs, and a wealth of tourism resources centered around activities such as skiing, horseback riding and golf. The area has gained interest from Oceania and overseas, and further development of the tourism industry is expected.

The recently acquired Property is in an excellent environment with 1,000ha of rich forest landscape, conveniently located a 20-minute drive from the international airport, New Chitose Airport. The final plans include 3 hotels, 40 cottages, as well as medical clinics. We aim to open a luxury hotel which provides international standards of service, which can become the center of excursions in Hokkaido.



<Plan Summary>

Plan Location:

620-1Azauenae,Tomakomai,Hokkaido,et al.

Use: Hotels, Medical clinics

Site Area: Approx. 1,057ha

Scheduled To Open: 2020 ~ 2026

Uenae district, Hokkaido