



October 9, 2019

MA PLATFORM, Inc.
Toranomon 2-chome Tower
2-3-17 Toranomon, Minato-ku, Tokyo, Japan
105-0001
Tel: (81) 3-3595-1731
Contact: Hiroya TAKAMURA
Mariko KATSUMURA

For immediate release

**MA Platform announces Japan's first luxury wellness resort
in Hokkaido**

"Jayasom Wellness Resort Hokkaido" aims to launch operation in 2023-2024

October 9, 2019 - ※¹MA Platform, Inc. (Headquarters: Minato-ku, Tokyo: President Toshio Komatsu), announced a plan to open "Jayasom Wellness Resort Hokkaido", an authentic and luxury wellness resort, in the rich forest area of Tomakomai, Hokkaido. The resort, that aims to cater to those seeking to improve their fitness levels and wellbeing, will be operated by Singapore-based wellness resort management company ※²Jayasom Pte. Ltd. The resort is expected to welcome its first guest by 2024.

The resort will be built in on the edge of a 1,000-hectare untouched forest area of Tomakomai City, which the Tokyo-based real estate developer and investor acquired in 2016. The "Jayasom Wellness Resort Hokkaido" marks the first phase of the Tomakomai International Forest Resort Project that MA Platform plans for its property.

The vast forest sits 20-minute drive from the New Chitose international airport, and it is designed for an international exchange base under which an ideal balance of nature protection and development has been promoted. Based on this concept, the Resort Project aims to contribute to protect and promote regional nature and wildlife through Sustainable Development by introducing Cause Related Marketing.

Wellness resorts, created to help guests recharge their body and nourish the mind, are seeing a booming demand and popularity across the continents. Japan is traditionally rich in wellness elements such as hot spring and zazen (seated meditation), as well as its

balanced and healthy Washoku diet (Japanese cookery). Building a luxury destination wellness resort in such a tranquil yet popular region is expected to mark a new stage for Japan's tourism and wellness industry.

※1 <About MA Platform, Inc.>

MA Platform (MAP) is a private investment company founded by Akira Mori, the Chairman of the Board of Mori Trust Co., Ltd. MA Platform has been investing in a variety of assets across the border. For more information please visit <https://ma-pf.jp/en/>.

※2 <About Jayasom Pte Ltd>

Jayasom is a wellness resort management company based in Singapore, with operations around the world. The company specializes in developing personal retreats with individual wellness programs and dietary plans to help guests achieve an ideal balance between body, mind and spirit. Jayasom offers retreats based on a similar platform developed by Thailand's wellness pioneer Chiva-Som, while also providing value-added services that reflect local traditions and wisdom.

For more information please contact communications@jayasom.com.

<Comments by MA Platform Owner: Akira Mori (Mori Trust Group Chairman)>

"Tomakomai offers a number of opportunities including its nature and close location to the New Chitose International Airport. I was always pursuing opportunities to create an international wellness resort in a tranquil and convenient location. I must say this is truly a rewarding step."

"We believe that Tomakomai's forests and protected wildlife areas are an ideal backdrop for guests seeking holistic healing and wellbeing."

"We have closely studied the existing market in Asia including pioneers like Chiva-Som in Thailand. The new resort will offer something similar to what Chiva-Som does, but with more Japanese essence including zen spirit and inner peace, surrounded by the rich experience of the four seasons of Japan."

<Comments by Jayasom CEO: Karen Campbell>

"The forest environment and the traditions of Japan and Hokkaido offer a rich foundation from which to express the wisdom of wellness".

"Jayasom Wellness Resort will appeal to people who wish to turn off the lights and see the moon and to those who understand how light changes as it passes through the leaves of trees. Meditation, cuisine, and activity inspired by the forest will be blended into a unique and inspiring retreat experience."

“We are honored to have this opportunity to realize the vision of MAP Chairman Mr. Mori to help people take time from daily life and to reconnect with calm and natural elements. We would also like to express our sincere appreciation for the Tomakomai City Mayor Mr. Iwakura for his valuable effort and support to help us make this happen.”

< Comment by Tomakomai City Mayor: Hirofumi Iwakura >

“I am very honored to have selected our Tomakomai as the project location of the International Forest Resort. I believe that plenty of charms and attractions that Tomakomai offers such as beautiful nature and transport convenience helped us win this opportunity.”

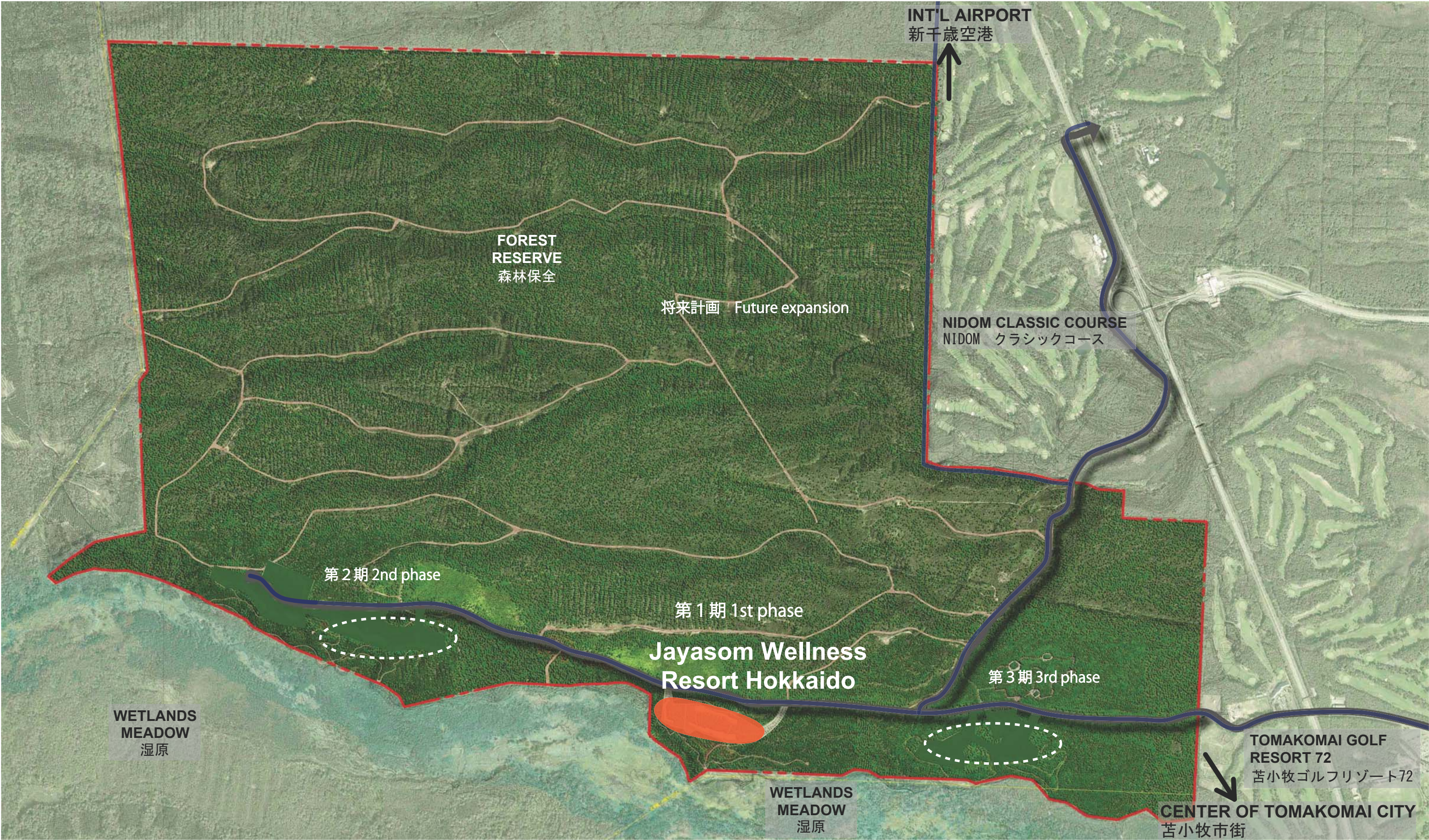
“I hope that the launch of the project with the development of Jayasom Wellness Resort Hokkaido will help us deliver Tomakomai’s attractions and appeal across the border. That would thus help our local economy and labor market, while also boosting the Tomakomai City’s brand value. Tomakomai City will also continue to promote further environmental improvements to create an attractive city.”

< About Tomakomai International Forest Resort Project (Overall Project) >

Site Area:	Approx. 1,000 ha
Development Area:	Approx. 40 ha (Remaining area will be left untouched as a natural forest)
Facilities:	<ul style="list-style-type: none">- Accommodation (includes luxury hotel, wellness resort, condominium, guest reception facility and retailers)- Sports and recreation facilities (includes forest-walking paths, horseback-riding paths, Nordic skiing paths, night walking tour, wildlife observation tour and snow activities)- Wellness facilities (includes Onsen hot springs, forest therapy facilities, clinics, and other wellness and health-checking and promoting facilities)- The project site is surrounded by a number of golf courses, cycling roads and canoe trails.

<About Jayasom Wellness Resort Hokkaido>

Location:	The first development site of the International Forest Resort (please refer to the separate zoning map)
Building area:	Approx. 66,000 m ²
Floor-area ratio (upper limit):	100%
Land use:	Luxury wellness resort and condominium
Design:	Taisei Corp. and P. T. Morimura & Associates, LTD
Design Supervision:	Kengo Kuma and Associates



苫小牧国際森林リゾートプロジェクトの概要
SITE PLAN AREAS DIAGRAM



外観イメージ image